



Cover outside screen removed.



Close-up behind screen with cover removed.



Inside view from lens end. Covers removed from part of case containing ribbon cable.



Inside view from viewer end. Hinge snapped down over ribbon cable.



Cover pieces for the ribbon cable spindle.



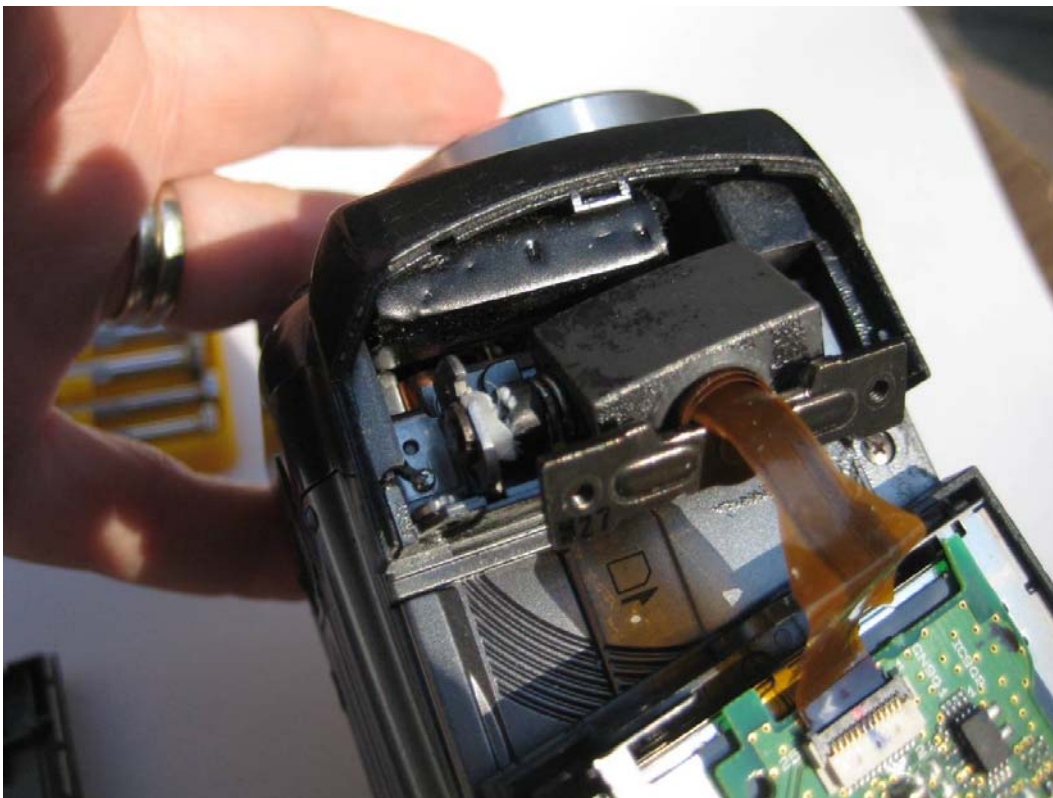
When pieces are in place, they will snap together.



The inside piece with the screw hole will slide over the ribbon cable under the screen.



The inside piece is in place.



Outside piece is almost in place.



The hinge is open and both pieces of ribbon cable cover are ready to snap together.



Snapping pieces together.



Replacing the screw.



Turn hinge back down.



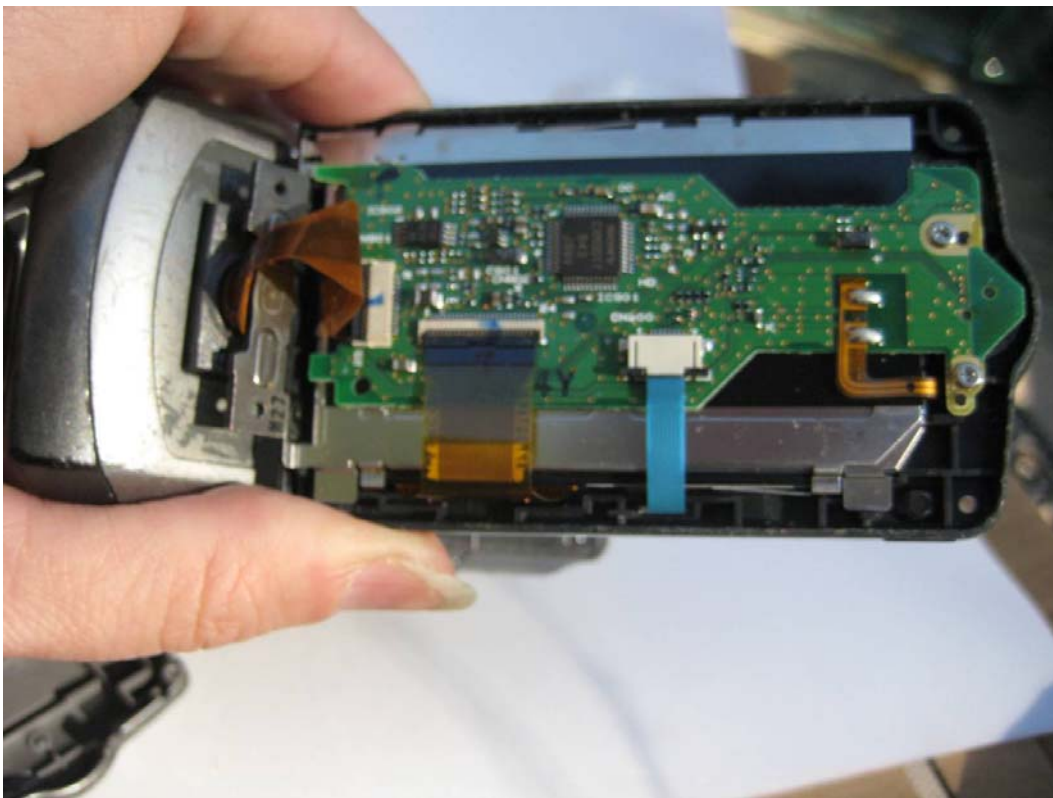
Outer cover is ready to slip under the edge near the lens on the case.



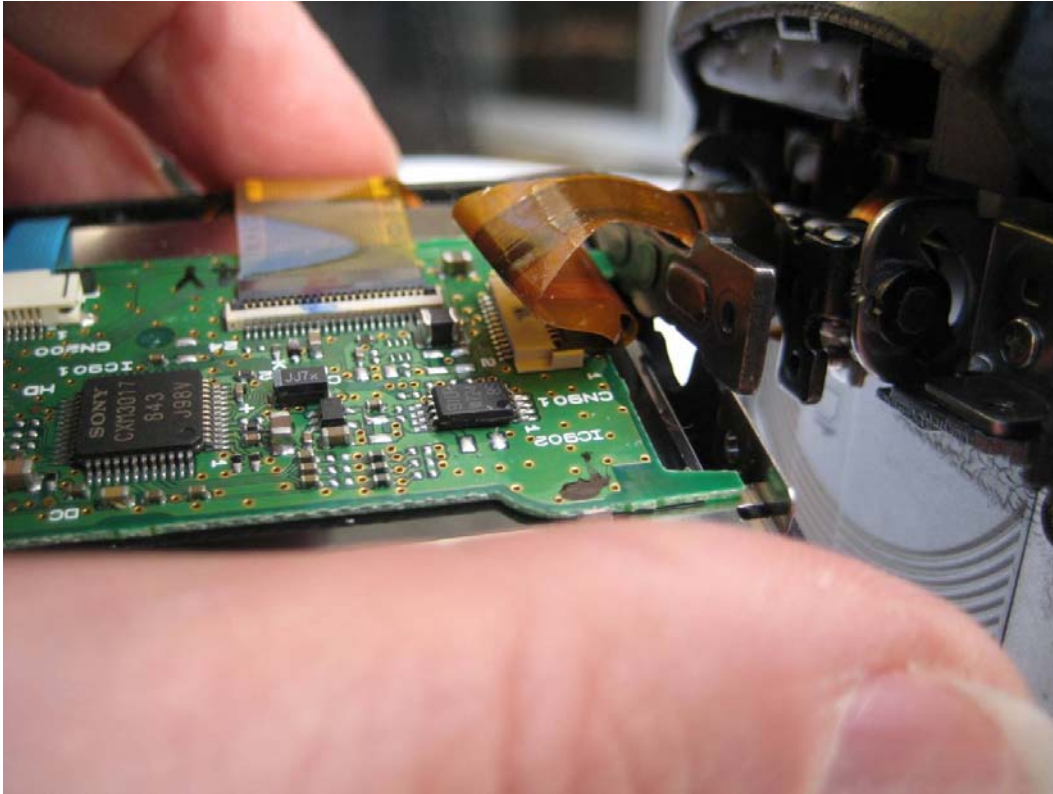
Outer cover snaps down gently over the ribbon cable covers. Check to make sure it's in the slots behind the hinge.



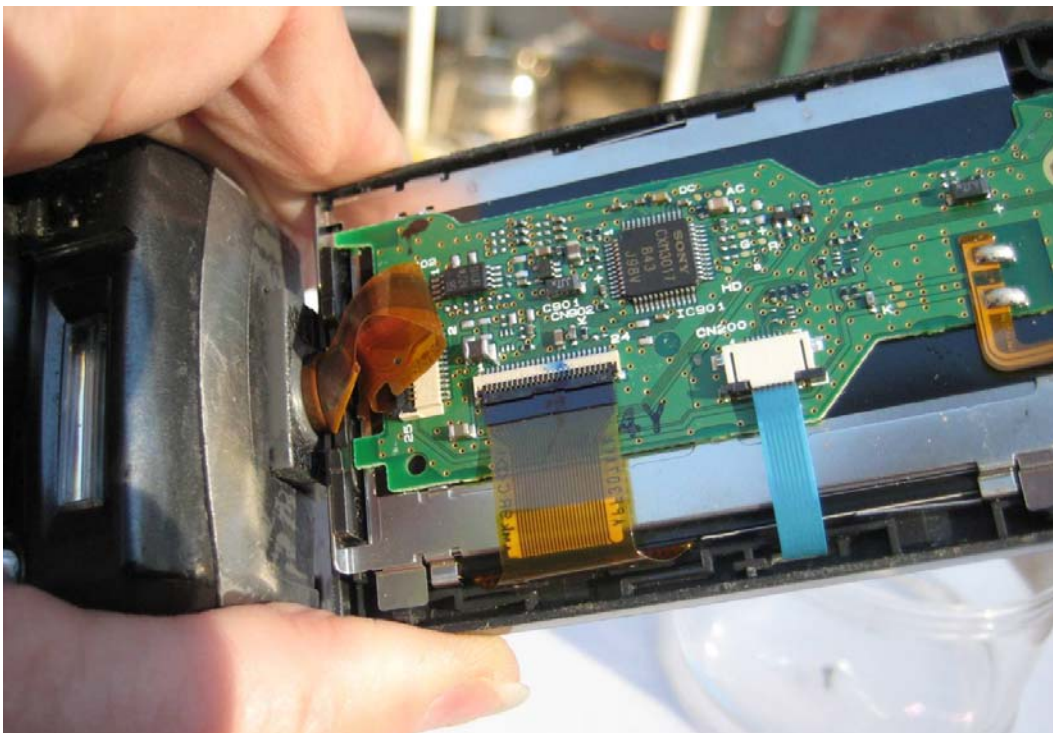
Ready to replace the 2 screws to secure the covers in place.



Hinge bracket is next to slot and ready to insert.



Sliding the hinge into the slot.



Hinge bracket slip into place under ribbon cable. Note ribbon cable will be folded loosely under cover, as shown.



Outer cover of screen is ready to replace.



Outer cover of screen ready to snap into place.



Outer cover of screen snapped into place.



Turn opened screen 90 degrees and replace screw on each side of hinge.



Replace screws at each corner to the left of screen.



Battery inserted and camcorder powered up.
Success!