

3.0 SiliconDVR Installer (For PC/Laptop Only)



The installation instructions for installing SiliconDVR are split into two sets: One for Intel Pro1000 NIC-based systems, and a second set for other generic NIC's systems not compatible with the Pleora High Performance Driver for Intel Pro1000 NIC's (eg. Marvell Yukon). These installation instructions assume a clean install of SiliconDVR.



If a previous version of SiliconDVR has been installed on the computer, follow the uninstall steps in '**3.4 Uninstalling Previous Versions of SiliconDVR**'.



The SiliconDVR Installer is only to be used on computers meeting the minimum system requirements outlined below. It is not for use on the SI-2K

3.1 - Minimum System Requirements:

- Windows XP SP2 32-bit, SP3 32-bit, Vista Business 32-bit, Vista Ultimate 32-bit (Note: SiliconDVR 1.1 is not compatible with 64-bit versions of Windows).
- Intel Core 2 Duo 2.33Ghz Processor or faster. For Windows Vista, suggested CPU processor is 2.4Ghz Intel Core 2 Duo or faster.
- 2GB of RAM. For Windows Vista, 4GB of RAM suggested.
- Either Intel Pro1000 NIC or other 10/100/1000 Gigabit Ethernet NIC capable of 8K Jumbo Packets
- Intel GMA950 embedded graphics, GMA X3100 embedded graphics or Nvidia Geforce/Quadro series of discrete graphics cards.
- Hard-drive or SSD capable of sustained write throughput of 30MB/s.

3.2 Installing SiliconDVR for Pro1000 NIC's:

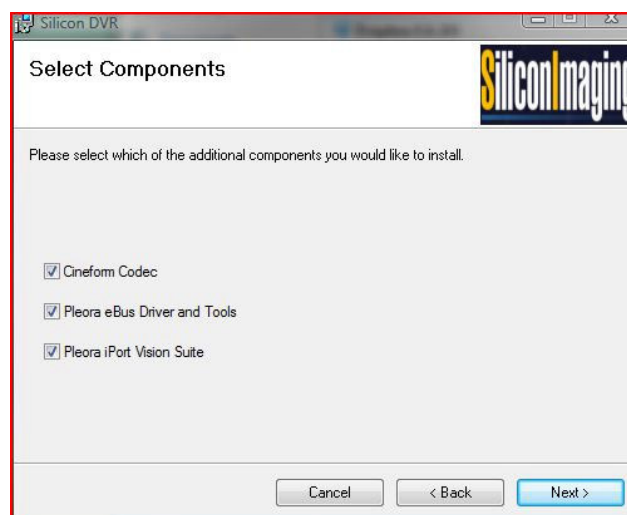
1. Certify that the Pro1000 NIC being used for SiliconDVR has the Intel Pro1000 NIC driver software installed and the NIC can operate as a "normal" NIC, capable of receiving normal TCP/IP network traffic such as email, internet, file-sharing, etc.



2. Open the SiliconDVR Installer. You will be greeted by the installer splash-screen. Press the "Next" button.



3. When you reach the "Select Components" screen, make sure that all three selections for CineForm, Pleora eBUS and Pleora iPort are checked.

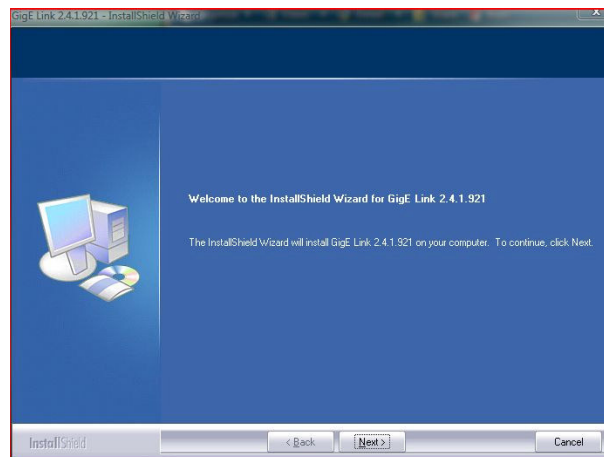


4. Click the "Next" button and proceed with the installation of SiliconDVR.

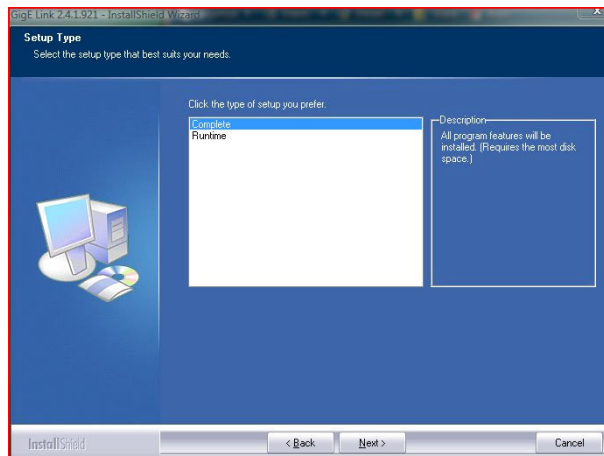
5. After SiliconDVR is installed, the CineForm installer will launch. Click though the “next” button and then when you arrive at the install screen, press the “Install” button.



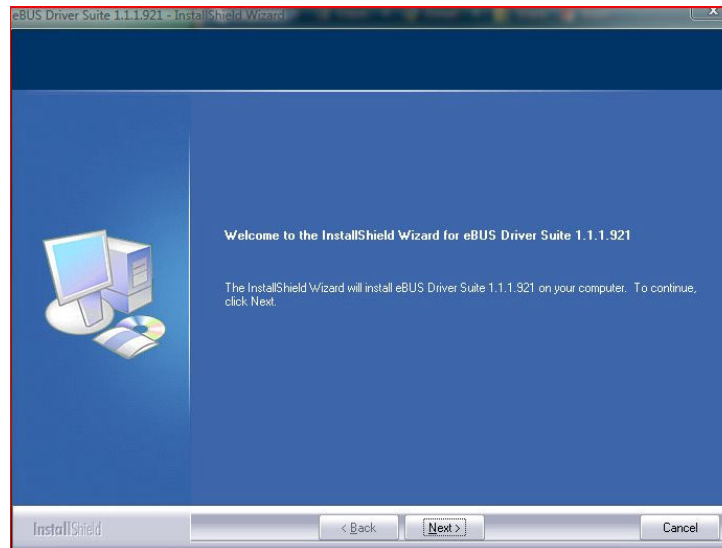
6. After the CineForm Installer completes, the Pleora iPort Vision Suite will be installed. Click the “Next” button.



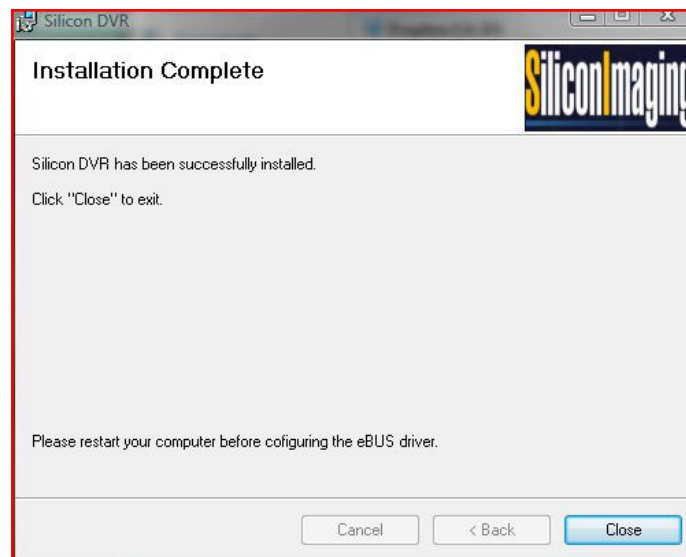
7. Under the “Setup Type” window select the “Complete” choice for installation.



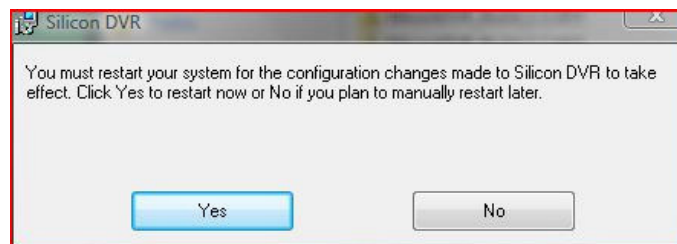
8. Once the iPort Vision Suite has completed installing, the Pleora eBUS driver Suite will launch. Click through the "Next" button until the driver is completed installing.



9. After the eBUS driver has completed installation, the installer will go back to the SiliconDVR installer splash-screen.

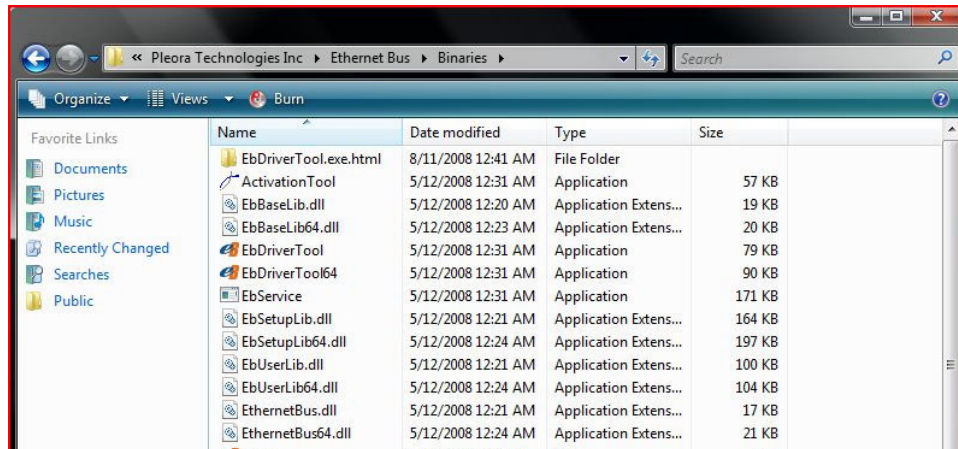


10. Once the SiliconDVR installer has completed, you will be prompted to reboot the computer.

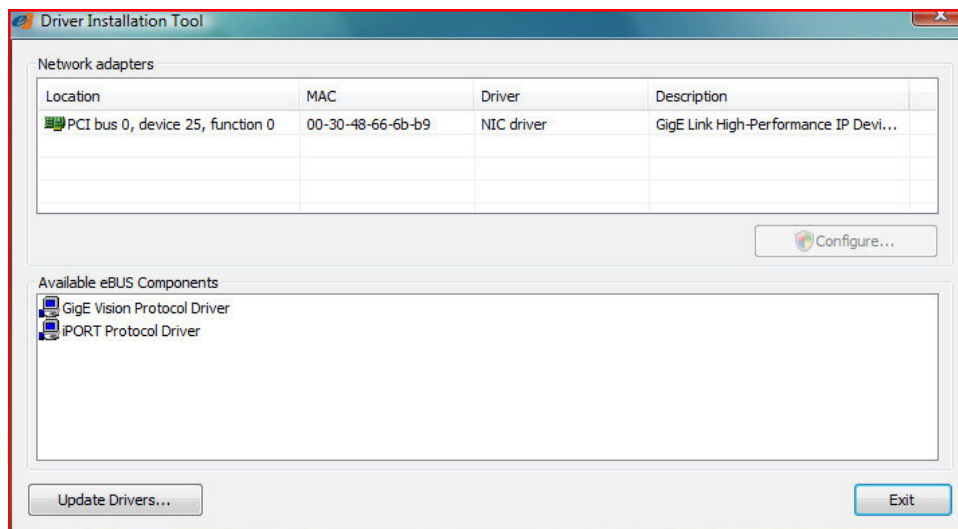


11. Restart the computer.

12. Installing Drivers: After rebooting the computer, go into \Program Files\Pleora Technologies Inc\Ethernet Bus\Binaries\ and launch the EbDriverTool.exe.

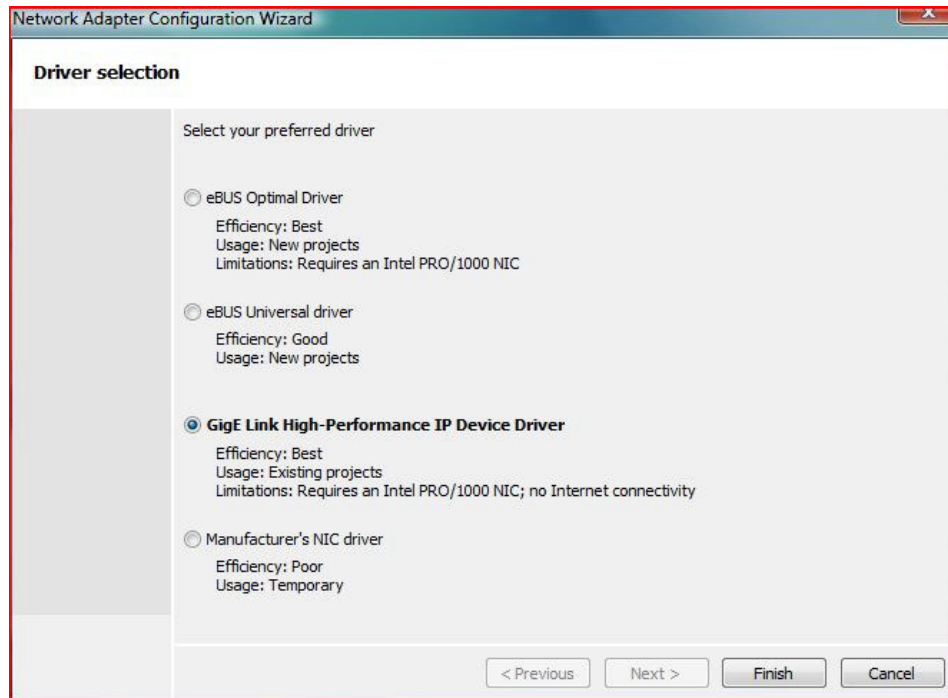


13. Once inside the EbDriverTool, you should see the active NIC on the computer available for installing the eBUS drivers on for use with SiliconDVR. It should be listed as "NIC Driver" under the "Driver" field.



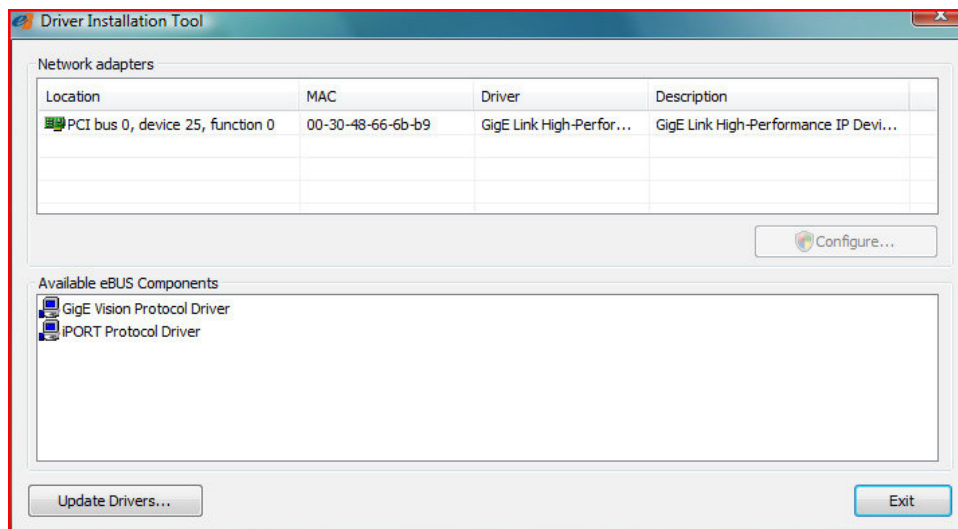
14. Click on the Intel Pro 1000 NIC that will be used with SiliconDVR, and then click on the "Configure" button.

15. Inside the configuration window, choose the "GigE Link High-Performance IP Device Driver" choice.



16. After the driver installs, close the configuration window.

17. The NIC in the main EbDriverTool window should now read "High Performance Driver" in the driver field.



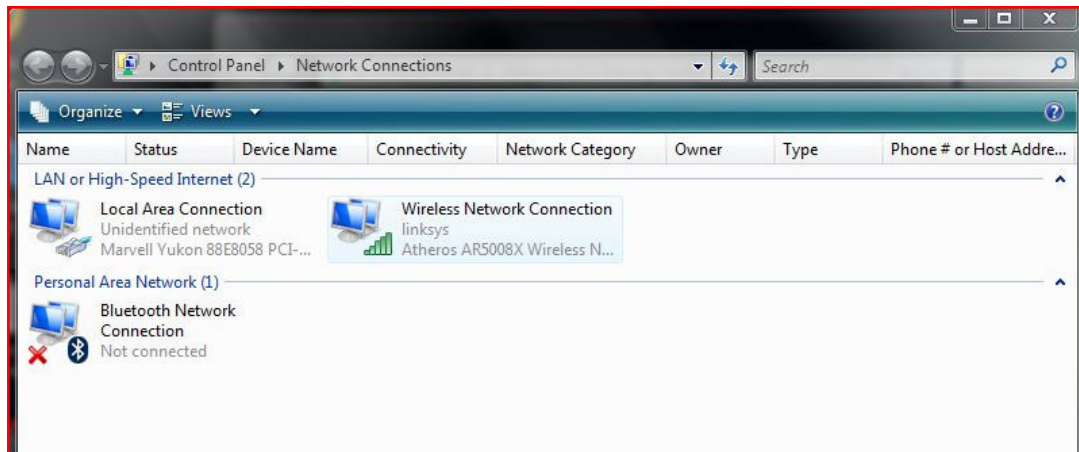
18. Quit the EbDriverTool application and then reboot the computer

19. After reboot, launch SiliconDVR.

3.3 Installing SiliconDVR for Generic NIC's:

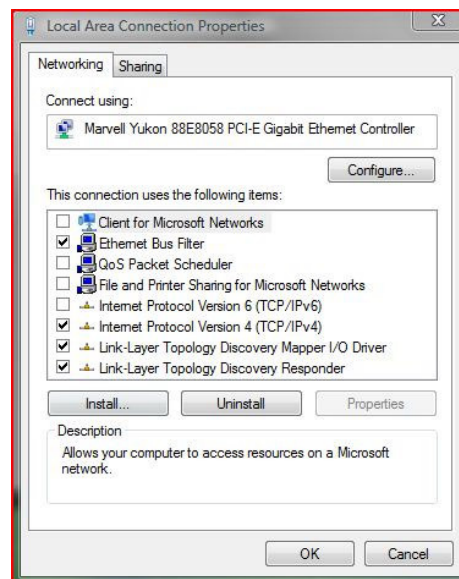
As a pre-installation procedure to optimize the generic NIC and set IP Addresses for use with SiliconDVR, follow these procedures:

1. Go into the Network Connections dialog box by right-clicking on Network Neighborhood and going to "properties".



2. Right-click on the "Local Area Connection" and go to "properties".

3. Turn off the "Client for Microsoft Windows", "QoS Packet Scheduler", "File and Printer Sharing", and on Windows Vista, the "IPv6" option.



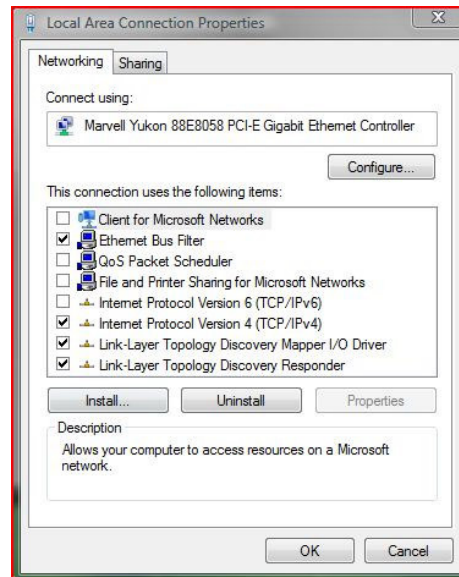
4. Click on the "Internet Protocol Version 4 (TCP/IPv4)" control and then the "properties" button.

5. Disable obtaining and address over DHCP, and manually set the IP address of the NIC to **169.254.143.1**. Then set the subnet mask to **255.255.255.0**.

6. Press "Okay" to close the TCP/IP properties window.

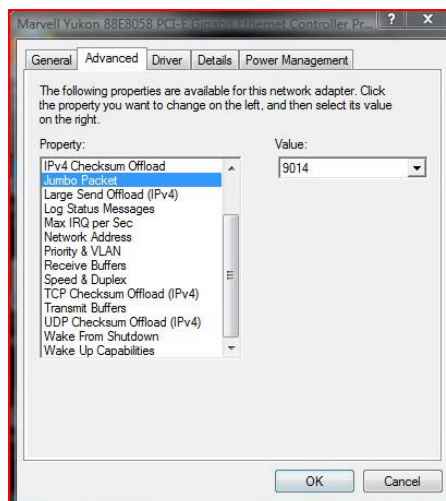
7. Next Press "Okay" to close the "Local Area Connection Properties" window. This will reset the NIC and the IP address of the NIC.

8. Right click-again to re-open the "Local Area Connection" by selecting the "Properties" setting again.

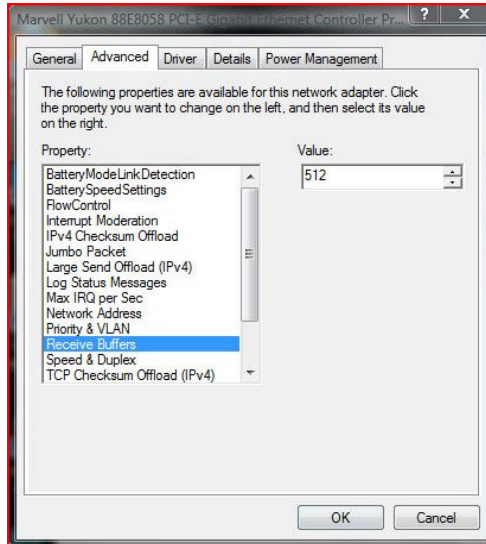


9. Click on the "Configure" button and then in the driver settings window select the "Advanced Tab".

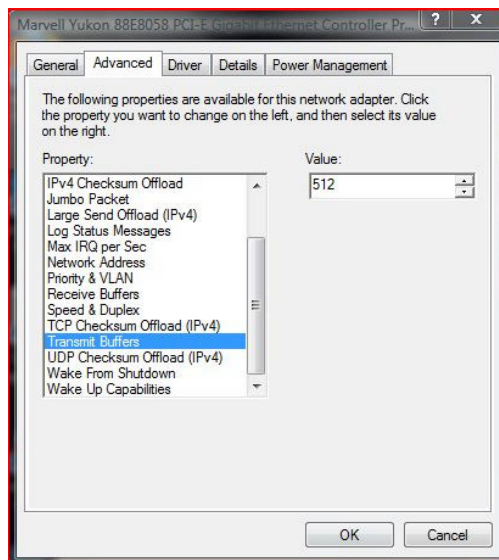
10. Click on the "Jumbo Packets" property and select the 9K packet size.



11. If you NIC provides these properties, next select the "Receive Buffers" property and set the number of buffers top 512.



12. If your NIC provides these properties, select the "Transmit Buffers" property and set the number of buffers to 512.



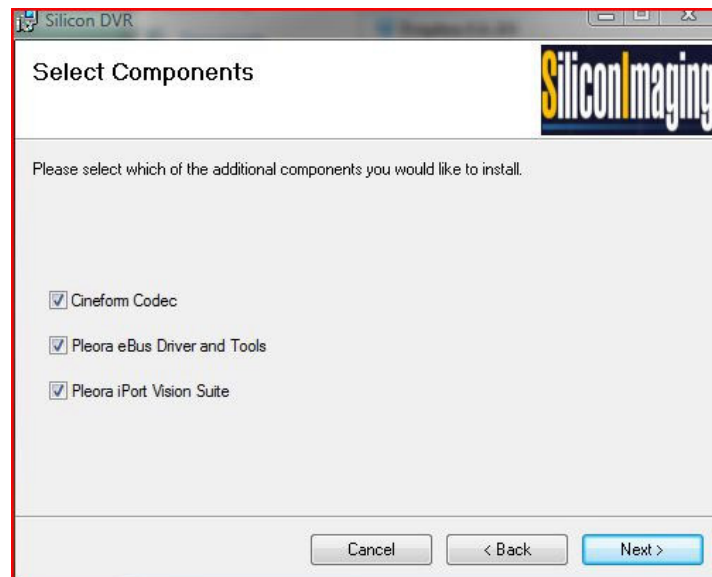
13. Press "Okay" to exit the driver configuration dialog box and then "Okay" again to exit the "Local Area Connection" properties dialog box.



14. Open the SiliconDVR Installer (SiliconDVRSetup1.1). You will be greeted by the installer splash-screen. Press the "Next" button.



15. When you reach the "Select Components" screen, make sure that all three selections for CineForm, Pleora eBUS and Pleora iPort are checked.

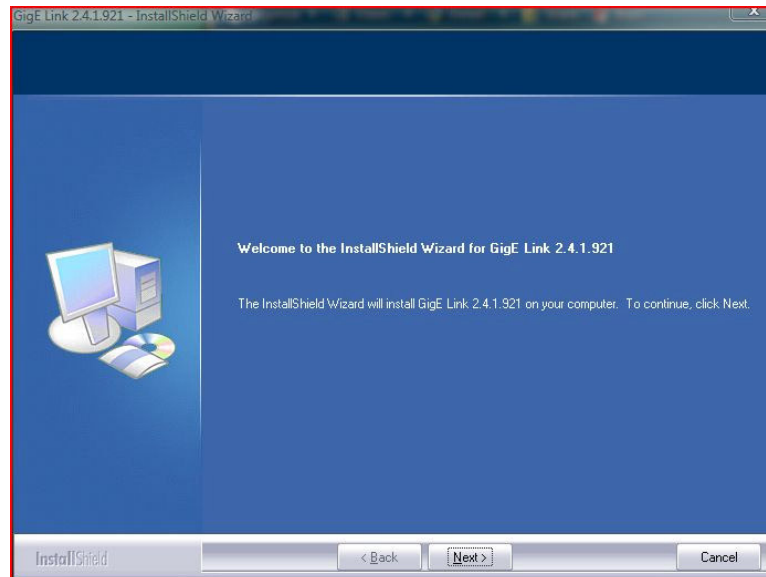


16. Click the "Next" button and proceed with the installation of SiliconDVR.

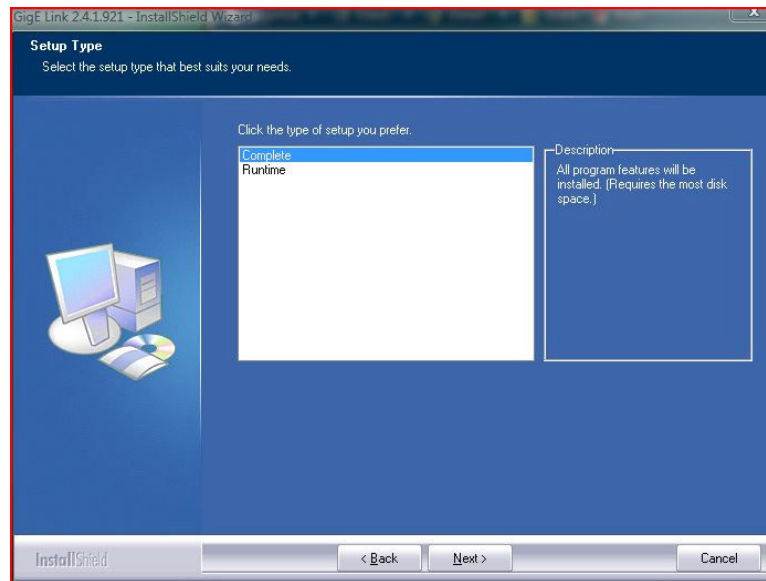
17. After SiliconDVR is installed, the CineForm installer will launch. Click through the “next” button and then when you arrive at the install screen, press the “Install” button.



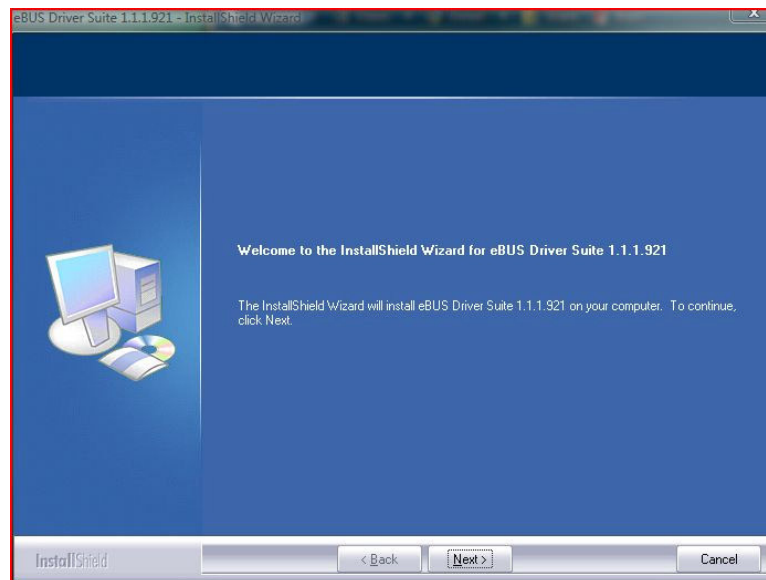
18. After the CineForm Installer completes, the Pleora iPort Vision Suite will begin installation. Click the “Next” button.



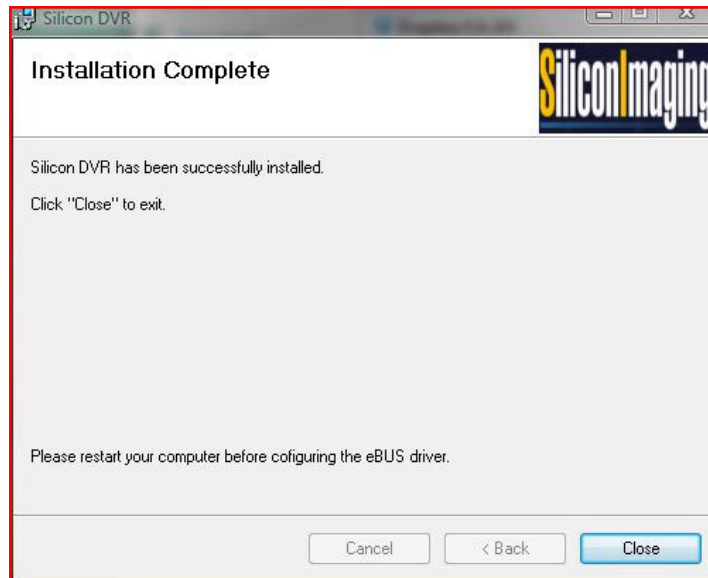
19. Under the "Setup Type" window select the "Complete" choice for installation.



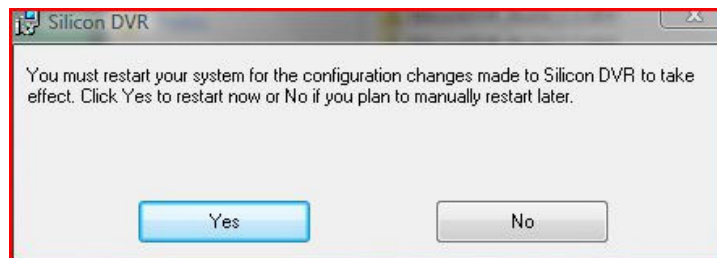
20. Once the iPort Vision Suite has completed installing, the Pleora eBUS driver Suite will launch. Click through the "Next" button until the driver is completed installing.



21. After the eBUS driver has completed installation, the installer will go back to the SiliconDVR installer splash-screen.

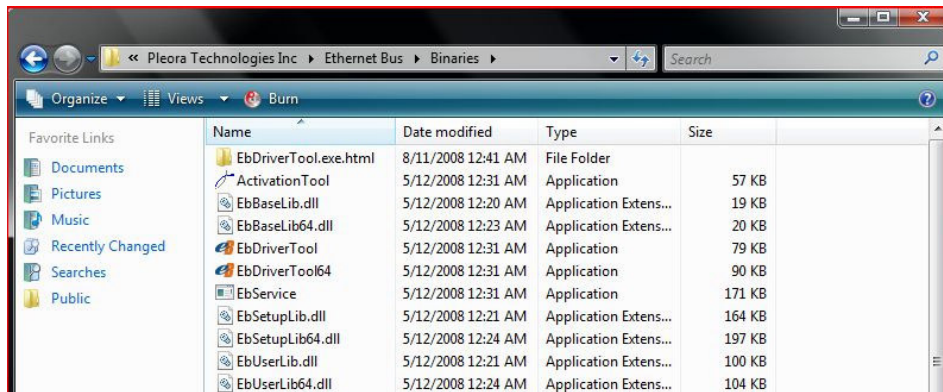


22. Once the SiliconDVR installer has completed, you will be prompted to reboot the computer.

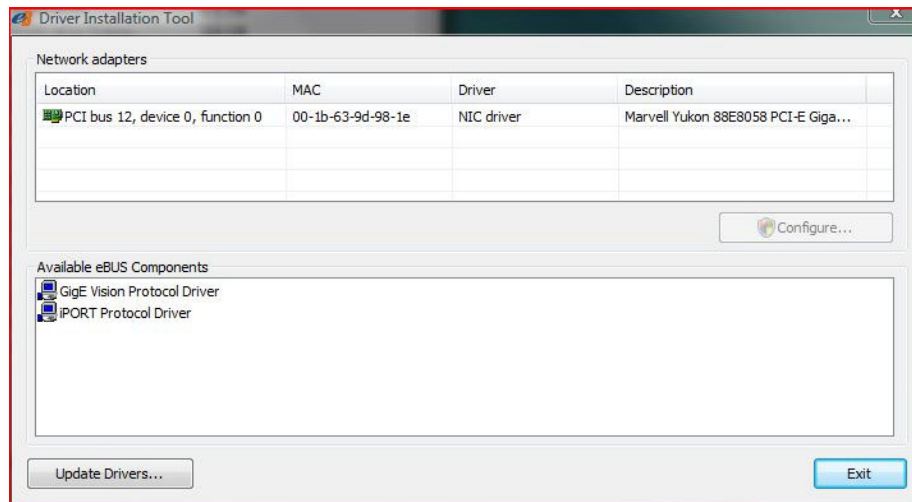


23. Restart the computer.

24. After rebooting the computer, go into \Program Files\Pleora Technologies Inc\Ethernet Bus\Binaries\ and launch the EbDriverTool.exe.

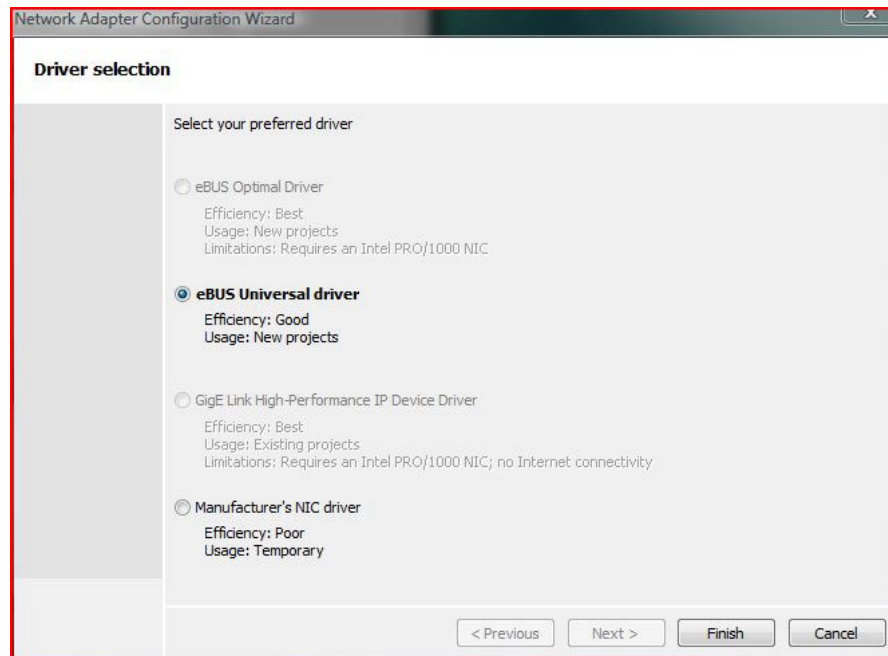


25. Once inside the EbDriverTool, you should see the active NIC on the computer available for installing the eBUS drivers on for use with SiliconDVR. It should be listed as "NIC Driver" under the "Driver" field.



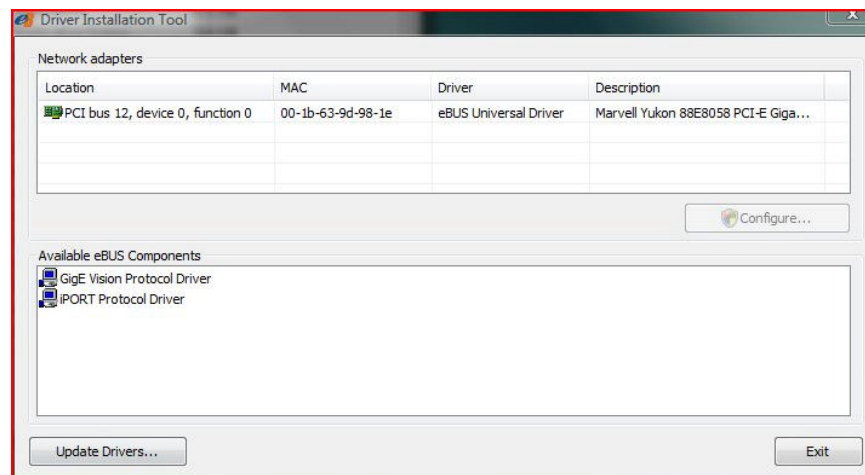
26. Click on the appropriate NIC that will be used with SiliconDVR, and then click on the "Configure" button.

27. Inside the configuration window, choose the “**eBUS Universal Driver**” choice.



28. After the driver installs, close the configuration window.

29. The NIC in the main EbDriverTool window should now read “eBUS Universal Driver” in the driver field.



30. Quit the EbDriverTool application and then reboot the computer

31. After reboot, launch SiliconDVR.