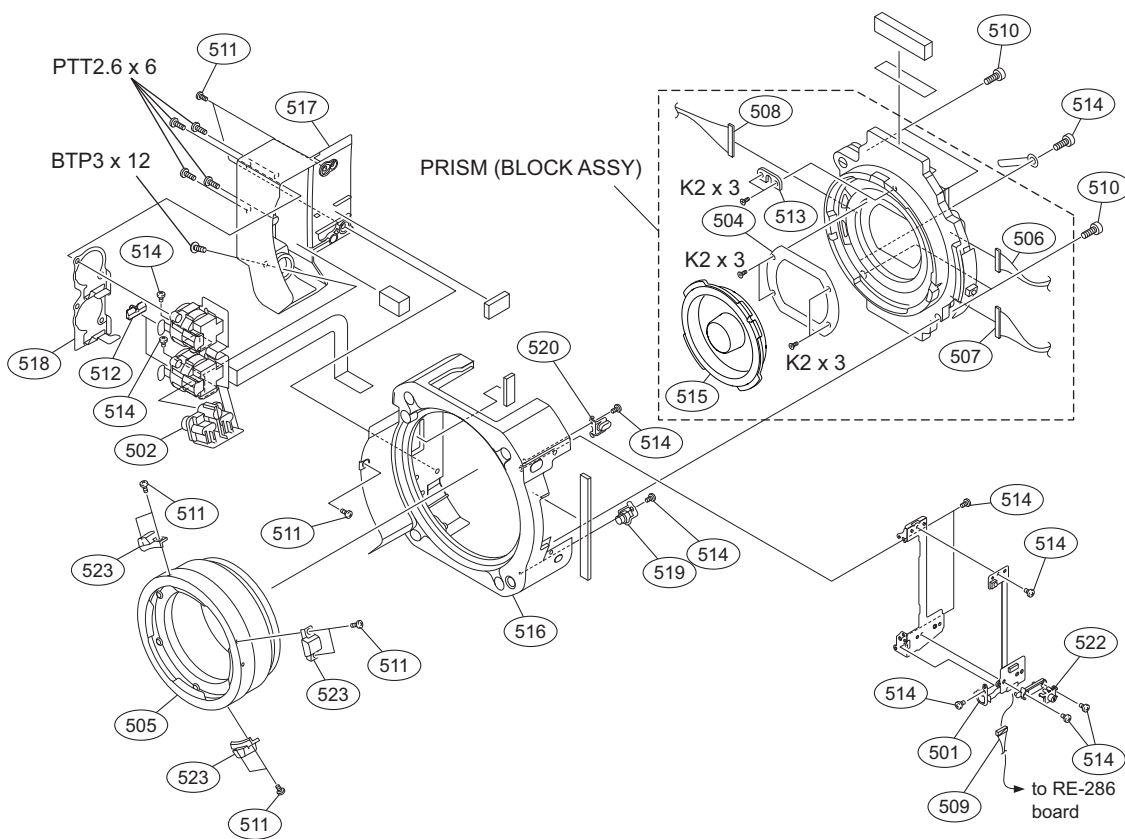


Front assembly



No.	Part No.	SP	Description
501	A-1799-080-A	s	MOUNTED CIRCUIT BOARD, SW-1508
502	A-1799-146-A	s	MOUNTED CIRCUIT BOARD, AXM-45
504	1-856-208-11	s	FILTER UNIT, OPTICAL
505	1-856-209-11	s	ADAPTOR, PL CAMERA
506	1-967-666-12	s	HARNESS, SUB (BI-DCP15)
507	1-967-667-12	s	HARNESS, SUB (BI-DCP22)
508	1-967-668-12	s	HARNESS (BI-DCP)
509	1-967-674-11	s	HARNESS, SUB (FRONT RE)
510	2-623-773-21	s	BOLT (M3X10), STAINLESS
511	3-080-203-31	s	SREW (M2), LOCK ACE, P2
512	3-278-665-02	s	KNOB, XLR SW
513	3-776-897-02	s	GUIDE PLATE
514	3-968-729-52	s	SCREW (M2), LOCK ACE, P2
515	4-104-999-02	s	CAP, MOUNT
516	4-260-152-01	s	PANEL, FRONT
517	4-260-153-02	s	BOX, MICROPHONE CONNECTOR
518	4-275-155-01	s	BRACKET (XLR)
519	4-275-156-01	s	BUTTON (ASSIGN)
520	4-275-157-01	s	BUTTON (5600K)
522	4-275-168-01	s	KNOB (SHUTTER)
523	4-275-298-02	s	LEVER, PL MOUNT
	7-627-452-18	s	SCREW, PRECISION +K 2X3
	7-685-548-19	s	SCREW +BTP 3X12 TYPE2 N-S
	7-685-792-09	s	SCREW +PTT 2.6X6 (S)