



Enosoft DV Logger

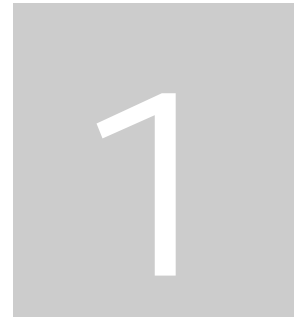
User Guide

Enosoft DV Logger

© Enosoft
3600 St Mary's Rd
Hillsborough, NC 27278
United States
Phone/Fax: +1 919 732 4280

Table of Contents

INTRODUCTION.....	1
Installation	1
GETTING STARTED.....	3
Launching the Enosoft DV Logger	3
Enosoft DV Logger Window	3
Monitor Window.....	3
Creating your first EDL and storyboard.....	4
EDL worksheet.....	6
Storyboard worksheet	7
USING THE LOGGER	9
Using the Enosoft DV Processor while logging	12
Logging DV files	12
Logging DV tapes or other external DV sources	12



Introduction

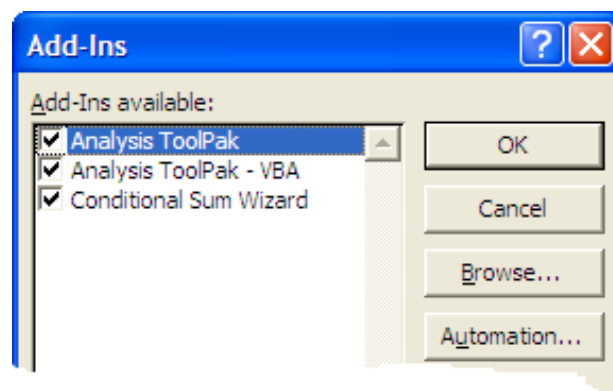
*What is the **Enosoft DV Logger** and how do I install it?*

The **Enosoft DV Logger** is an ‘Add-In’ for Microsoft® Excel that combines the power of the **Enosoft DV Processor** with the flexibility and familiarity of Excel. With this you can generate edit decision lists (EDLs) and storyboards for DV video. The logging can be performed on existing DV format files or incoming DV video during a capture session.

Installation

The **Enosoft DV Logger** is installed using the normal Excel method:

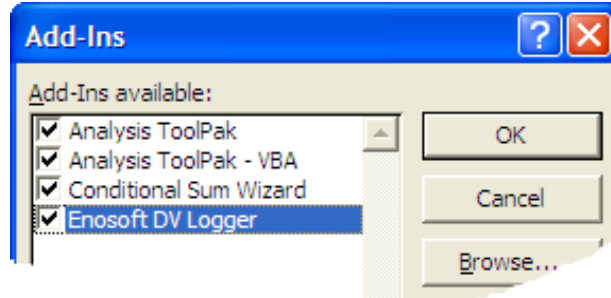
- Open Excel and make sure that at least one workbook is open. Typically, this will be a new workbook created when Excel opens.
- Select **Tools\Add-Ins...** to open the Add-Ins dialog window:



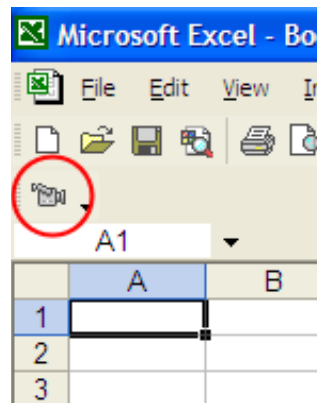
(The list will vary depending on any Add-Ins already installed.)

- Click the **Browse...** button and open the **Enosoft DV Processor** folder (usually **C:\Program Files\Enosoft\Enosoft DV Processor**)

- Double-click on **EnoDVLogger.xla** (the .xla may not be visible depending on your folder view options). This will install the Add-In and it will appear in the list of Add-Ins:



- Click the **OK** button to close the Add-Ins dialog window.
- Once installed correctly, a new toolbar will appear in the main Excel window:



The **Enosoft DV Logger** toolbar consists of a single button with a camcorder icon.

That's it. From now on, whenever you launch Excel, the **Enosoft DV Logger** Add-In will be loaded automatically.




Getting Started

What are the basic functions and how do I use them?

The **Enosoft DV Logger** has two basic functions:

- Select a DV source for logging
- Create an EDL and storyboard for the DV source

Launching the Enosoft DV Logger

To launch the **Enosoft DV Logger**, simply click on the  toolbar button. You will see two windows appear in Excel (see next page). In addition, you will see in the task bar that the **Enosoft DV Processor** is running.

Enosoft DV Logger Window

The main window that appears is the ‘Enosoft DV Logger’ window and is used to configure and operate the logging process. The details of each setting are provided later in Section 3.

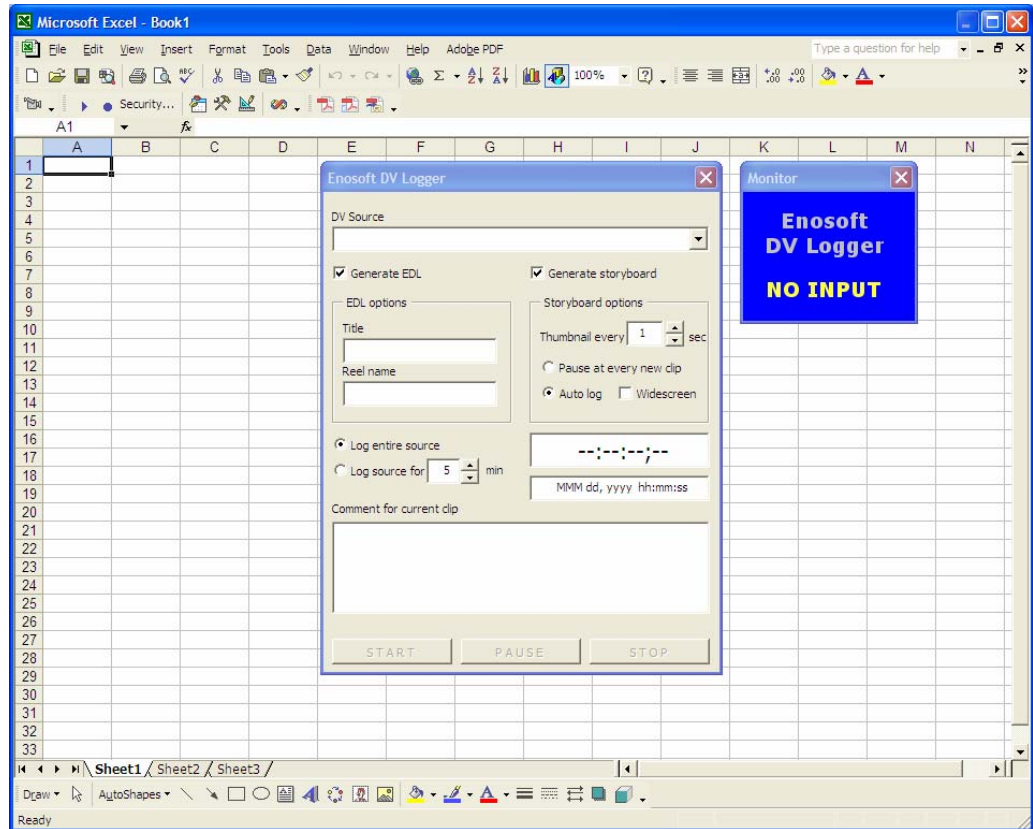
Monitor Window

During the logging process, the ‘Monitor’ window displays the video portion of the DV source being logged. This window is always on top of every other window on your computer’s desktop¹.

Note: when the **Enosoft DV Logger** is launched, the minimize button for Excel is disabled. i.e., Excel cannot be minimized. This is to prevent the **Enosoft DV Logger**

¹ Other applications that also have “always on top” windows may interfere with the Monitor window (e.g., Task Manager and the drop-down address list in Internet Explorer). If the Monitor window is partially or wholly obstructed then the storyboard thumbnails will be affected.

window from being closed when Excel is minimized. The minimize button is re-enabled when the **Enosoft DV Logger** is closed.



Creating your first EDL and storyboard

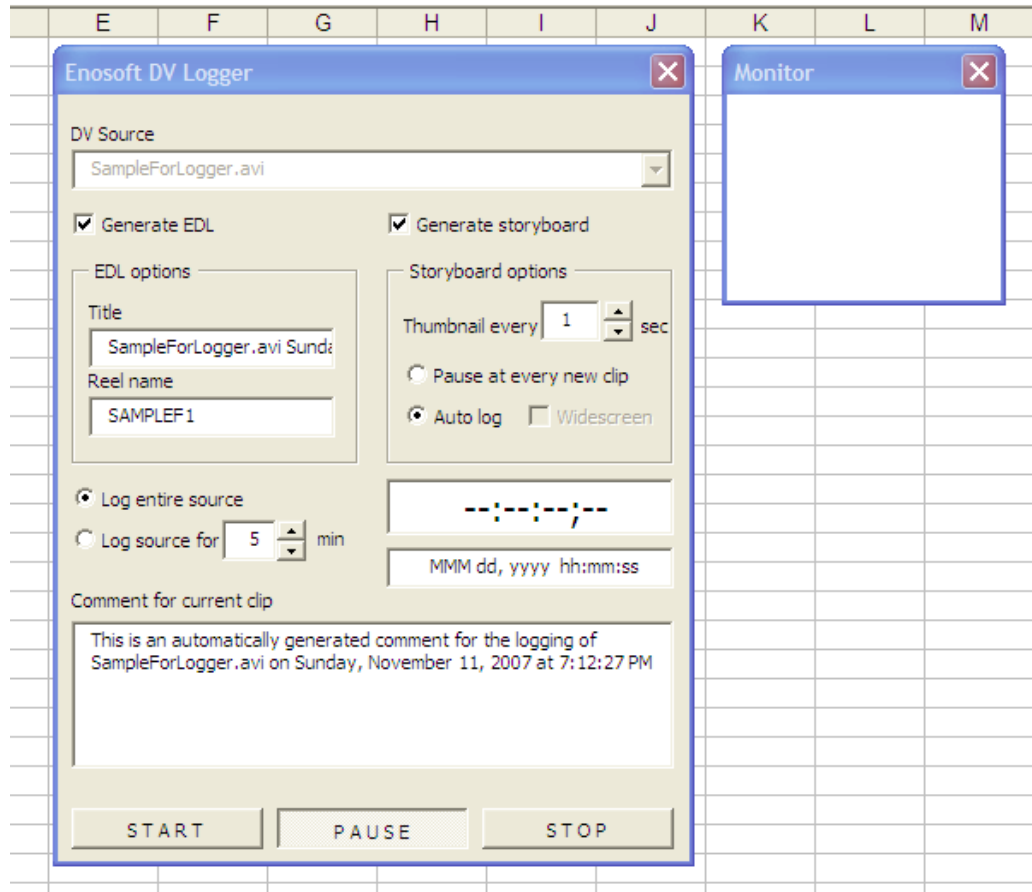
Use the **DV Source** drop-down list to select a suitable source for logging. The list will contain the same items as for the **Input** stage of the **Enosoft DV Processor**. Refer to the **Enosoft DV Processor** Help for more information.

Once a DV source has been selected, the main window will change. Some of the controls will become disabled and others will become enabled (see next page). In particular, the 'transport control' buttons (**START**, **PAUSE** and **STOP**) will become enabled.

The logger is put into **PAUSE** mode. For DV file sources, the Monitor window will show a blank image. For external DV device sources, the device will be put into pause mode (if supported) and the Monitor window will show the current video frame.

To start the logging process, simply click the **START** button. Using the default settings, the entire DV source will be logged. Section 3 describes each of the settings.

Once the logging begins, the main Excel window is hidden. This is to prevent any interactive use of Excel from interfering with the generation of the EDL and storyboard worksheets.

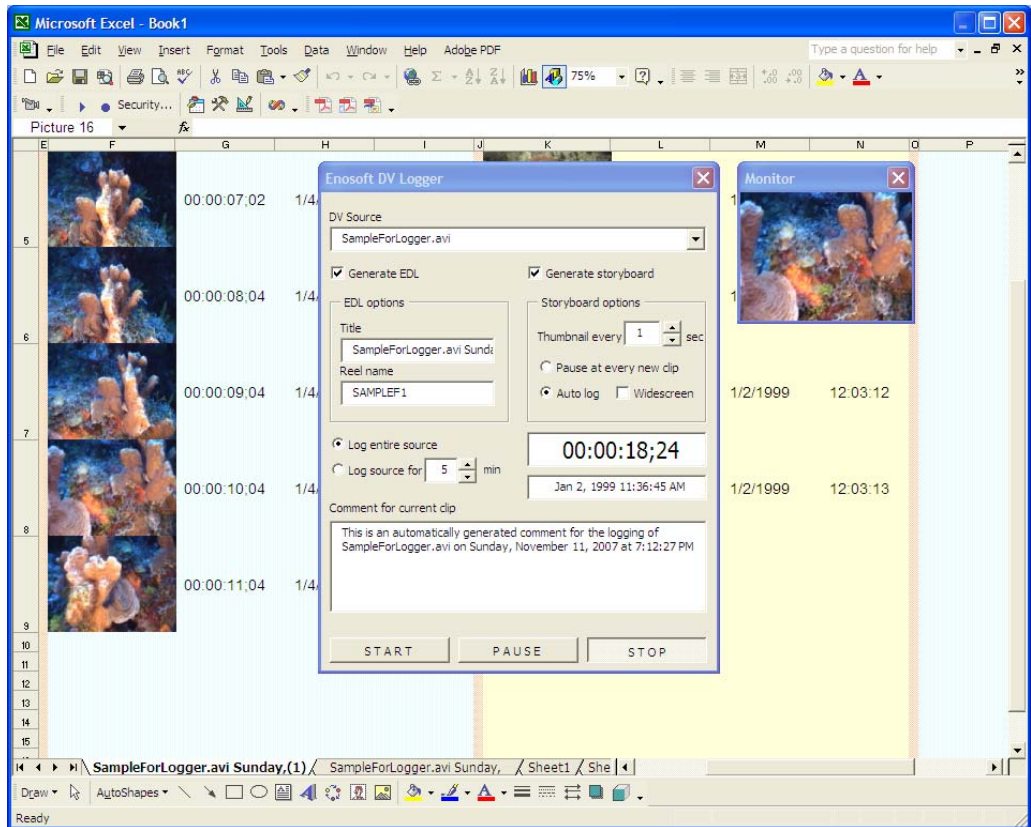


Note: when generating a storyboard, the **Enosoft DV Logger** uses the Windows Clipboard. You should not use the clipboard functions (Copy, Cut and Paste) in any other program while logging as this may have unexpected results both in the storyboard worksheet and the other program.

When the logging has stopped, Excel will reappear and you will see that two worksheets have been created. The storyboard worksheet is shown as the active worksheet. At this point you can look at the contents of both sheets and use Excel as usual, though the minimize button remains disabled.

At this point, you can select another DV source to log or you can close the logger. To close the logger, click on the standard Windows close button in the top righthand corner of the main logger window. This will also close the **Enosoft DV Processor** that is running.

Note: it may take a few seconds before the **Enosoft DV Logger** closes completely. During this time, Excel may be unresponsive.



EDL worksheet

A CMX 3600 format EDL is created in the EDL worksheet. The worksheet can be saved as a tab-delimited text file and then imported into a variety of non-linear editors and other video-related applications.


The screenshot shows the EDL worksheet in Microsoft Excel. The worksheet contains the following data:

	A	B	C	D	E	F	G	H
1	TITLE:	SAMPLEFORLOGGER.AVI SUNDAY, NOVEMBER 11, 2007 7:12:27 PM						
2	FCM:	DROP FRAME						
3	001	SAMPLEF1	AA/V	C	00:00:03:28	00:00:11:16	00:00:03:28	00:00:11:16
4	* FROM CLIP NAME: SampleForLogger.avi							
5	002	SAMPLEF1	AA/V	C	00:00:11:18	00:00:17:22	00:00:11:18	00:00:17:22
6	* FROM CLIP NAME: SampleForLogger.avi							
7								

The EDL created by the **Enosoft DV Logger** lists every new clip detected in the DV source. A new clip occurs when there is a discontinuity in the date and time of recording of more than one second.

Storyboard worksheet

The storyboard worksheet provides a continuous graphical representation of the contents of the DV source. At a fixed interval (e.g., every second), a 'thumbnail' image of the video is created and recorded in the storyboard worksheet along with the timecode, recording date and recording time:

Thumbnail	Timecode	Recording Date	Recording Time
	00:00:05;04	1/4/1999	9:53:48
	00:00:06;04	1/4/1999	9:53:49

The storyboard is created vertically. Each clip is listed in its own set of columns headed by a set of merged cells for adding a comment about the clip. This can be added after logging has finished and/or during the logging process by using the **Comment for current clip** text box in the main logger window.

Using Excel's zoom feature, you can see at a glance the contents of the storyboard worksheet. Scrolling vertically allows you to watch each clip in a manner similar to scrubbing a timeline in a non-linear editor.

Hint: prior to saving the storyboard, you should compress the images using Excel's Compress Pictures feature (see Excel's documentation for more details).

Microsoft Excel - EDL and storyboard.xls

File Edit View Insert Format Tools Data Window Help Adobe PDF

Type a question for help

HM18

Thumbnail	Timestamp	Recording Date	Recording Time	Thumbnail	Timestamp	Recording Date	Recording Time	Thumbnail	Timestamp	Recording Date	Recording Time	Thumbnail	Timestamp	Recording Date	Recording Time	Thumbnail	Timestamp	Recording Date	Recording Time
	00:01:06:12	5/2/2013	02:12:43		00:01:06:22	5/2/2013	5:18:01		00:01:06:18	5/2/2013	01:00:45		00:01:06:25	5/2/2013	05:07:48		00:01:06:01	5/2/2013	07:02:18
	00:01:06:12	5/2/2013	02:12:58		00:01:06:22	5/2/2013	5:18:02		00:01:06:18	5/2/2013	01:00:46		00:01:06:25	5/2/2013	05:07:41		00:01:06:01	5/2/2013	07:02:15
	00:01:06:24	5/2/2013	02:12:51		00:01:06:28	5/2/2013	5:18:02		00:01:06:18	5/2/2013	01:00:47		00:01:06:25	5/2/2013	05:07:42		00:01:06:01	5/2/2013	07:02:28
	00:01:06:12	5/2/2013	02:12:52		00:01:06:28	5/2/2013	5:18:03		00:01:06:18	5/2/2013	01:00:48		00:01:06:25	5/2/2013	05:07:43		00:01:06:01	5/2/2013	07:02:21
	00:01:06:12	5/2/2013	02:12:53		00:01:06:22	5/2/2013	5:18:05		00:01:06:17	5/2/2013	01:00:48		00:01:06:25	5/2/2013	05:07:44		00:01:06:01	5/2/2013	07:02:22
	00:01:06:12	5/2/2013	02:12:54		00:01:06:22	5/2/2013	5:18:06		00:01:06:15	5/2/2013	01:00:58		00:01:06:25	5/2/2013	05:07:45		00:01:06:01	5/2/2013	07:02:23
	00:01:06:12	5/2/2013	02:12:55						00:01:06:17	5/2/2013	01:00:58		00:01:06:25	5/2/2013	05:07:46		00:01:06:01	5/2/2013	07:02:24
	00:01:06:12	5/2/2013	02:12:56						00:01:06:18	5/2/2013	01:00:52		00:01:06:25	5/2/2013	05:07:47		00:01:06:01	5/2/2013	07:02:25
	00:01:06:14	5/2/2013	02:12:57						00:01:06:17	5/2/2013	01:00:53						00:01:06:01	5/2/2013	07:02:26
	00:01:06:14	5/2/2013	02:12:58						00:01:06:17	5/2/2013	01:00:54						00:01:06:01	5/2/2013	07:02:27
	00:01:06:18	5/2/2013	02:12:53						00:01:06:17	5/2/2013	01:00:55						00:01:06:01	5/2/2013	07:02:28
	00:01:06:12	5/2/2013	02:12:58						00:01:06:17	5/2/2013	01:00:56						00:01:06:01	5/2/2013	07:02:29

SampleForLogger.avi Sunday,(2) SampleForLogger.avi Sunday, SampleForLo

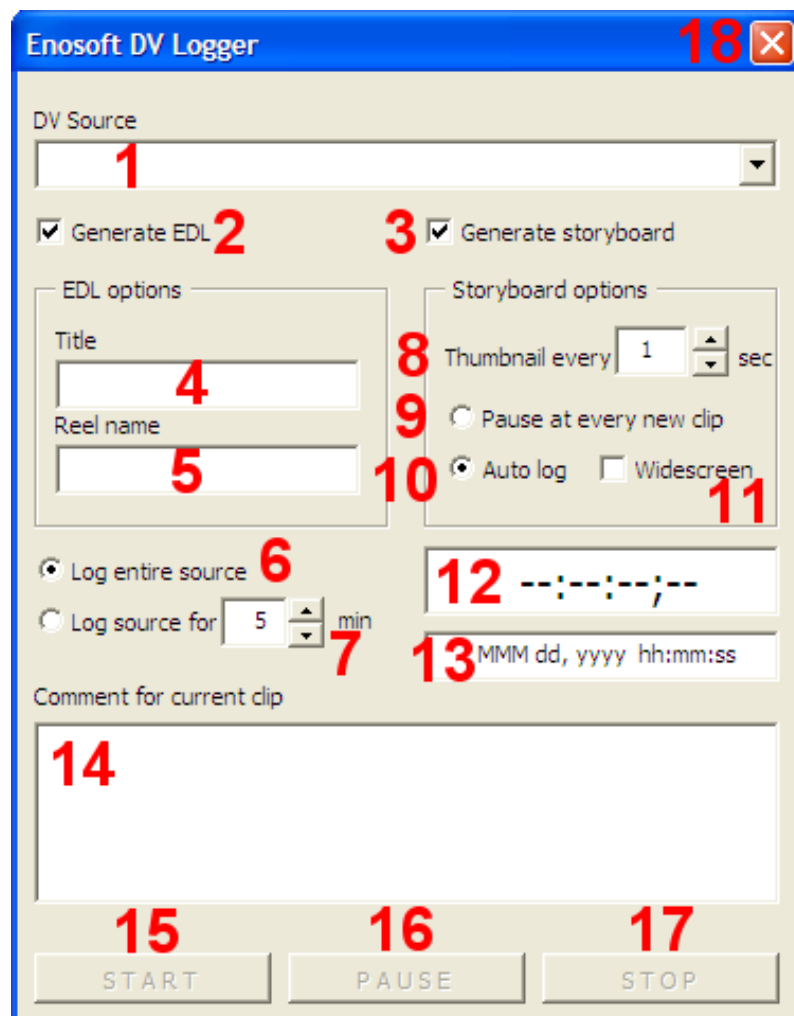
Ready

3

Using the Logger


*How do I use the **Enosoft DV Logger** to suit my needs?*

This section describes each of the settings that you can adjust to control how the **Enosoft DV Logger** logs your DV material. The settings are changed using the various controls in the main logger window:



1. **DV Source** – this drop-down list is used to select the DV source material for logging. The list of items is the same as shown in the **Input** stage of the **Enosoft DV Processor**.
 2. **Generate EDL** – when this box is checked, the logger will generate a new worksheet containing a CMX 3600 compatible EDL. Default: checked.
 3. **Generate storyboard** - when this box is checked, the logger will generate a new worksheet containing a storyboard. Default: checked.
 4. **Title** – the title to be used in the EDL. This setting also determines the names of the new worksheets created when the logging begins. Even if EDL generation is turned off, this setting is used to determine the name of the storyboard worksheet. Default: the same name as the **DV Source**.
 5. **Reel name** – the name to be used in the EDL’s reel name field. Automatically converted to uppercase. Default: the first seven letters of the **DV Source** + “1”.
 6. **Log entire source** – the entire source is logged. The logger uses the timecode to determine when the end of the source is reached. Specifically, the logger stops logging when the timecode remains at a fixed value for more than two seconds. If you are logging from an external DV device and press the device’s pause button (directly or via the **Enosoft DV Processor**), then the logger will detect a fixed timecode and stop. If you need to pause the input, use the logger’s own **PAUSE** button. The same applies to DV sources – do not use the **Enosoft DV Processor** directly to pause playback of the file. Default: On.
 7. **Log source for <n> minutes** – the source is logged for the specified number of minutes. You can type the number directly or use the up/down control. Minimum = 1, maximum = 999. Default: 5 minutes, turned off.
 8. **Thumbnail every <n> seconds** – how often a thumbnail is generated from the DV source and new record written to the storyboard worksheet. The corresponding timecode, recording date and recording time are also written. The number can be typed directly or set via the up/down control. Minimum = 1, maximum = 60. Default: 1.
 9. **Pause at every new clip** – whenever a new clip is detected, the logging process will pause and Excel will become visible. This provides you with an opportunity to create/complete the comment for the previous clip and to look at the worksheets(s) created for the current logging session. Use the **START** button to resume logging or the **STOP** button to stop it. Default: Off
 10. **Auto log** – the logging runs continuously without pausing at each new clip. This permits unattended logging. If clip comments are required, they will need
-

to be entered directly in the storyboard worksheet after logging has finished.
Default: On

11. **Widescreen** – when checked, the video in the Monitor window and the generated thumbnails are displayed with a 16:9 aspect ratio, otherwise the aspect ratio is 4:3. The size of the thumbnail images can be changed after logging simply by changing the width of the worksheet columns containing the thumbnails. Default: Unchecked (4:3)
 12. **Timecode** – the timecode is displayed here in HH:MM:SS;FF format (NTSC) or HH:MM:SS:FF format (PAL). Read only.
 13. **Recording time and date** – the recording date and time are displayed in a format suitable for your location. Read only.
 14. **Comment for current clip** – you can enter any text up to 255 characters in length for each new clip. Default: “This is an automatically generated comment for the logging of <DV Source> on <Date> at <Time>”
 15. **START** – begins/resumes the logging process. When the **DV Source** is an external DV device, the logger puts it into playback mode (if supported). The main Excel window is hidden. Default: Disabled (no **DV Source**); Not pressed (immediately after **DV Source** selected)
 16. **PAUSE** – pauses the logging process. When the **DV Source** is an external DV device, the logger puts it into pause mode (if supported). The main Excel window is unhidden. Use the **START** button to resume logging. Default: Disabled (no **DV Source**); Pressed (immediately after **DV Source** selected)
 17. **STOP** - stops the logging process. When the **DV Source** is an external DV device, the logger puts it into stop mode (if supported). The main Excel window is unhidden. Default: Disabled (no **DV Source**); Not pressed (immediately after **DV Source** selected)
 18.  - closes the **Enosoft DV Logger** and the **Enosoft DV Processor**. It may take a few seconds for this to complete and Excel may be unresponsive. Excel’s minimize capability is restored.
-

Using the Enosoft DV Processor while logging

The **Enosoft DV Logger** uses the **Enosoft DV Processor** to obtain all the information from the DV source required to create the EDL and storyboard. You can use the **Enosoft DV Processor** in the same way as if you had launched it directly².

Logging DV files

When logging DV files, most likely you won't need to perform any processing on the file. In this case, the **Enosoft DV Logger** takes care of configuring and controlling the **Enosoft DV Processor**. Specifically, an **Input** source is selected and no **Output** is selected. The source file is simply played back in the **Input** stage of the **Enosoft DV Processor**.

Logging DV tapes or other external DV sources

When logging DV material from an external DV device (e.g., a tape in a DV camcorder), you will most likely want to capture the same DV source to your computer's hard drive. (If you simply want to log the contents of a tape without capturing, then the previous scenario applies - "Logging DV files").

After launching the **Enosoft DV Logger** and selecting a DV source, switch to the **Enosoft DV Processor**. Select a suitable output destination (e.g., a Type-1 DV AVI file) and enable **Smart Device Control**. You can also enable other features as required such as text overlay. When ready, click the logger's **START** button. Both capturing and logging will begin.

² The input video will not be visible in the Enosoft DV Processor's main window. Instead, it will be displayed in the Enosoft DV Logger's Monitor window.
