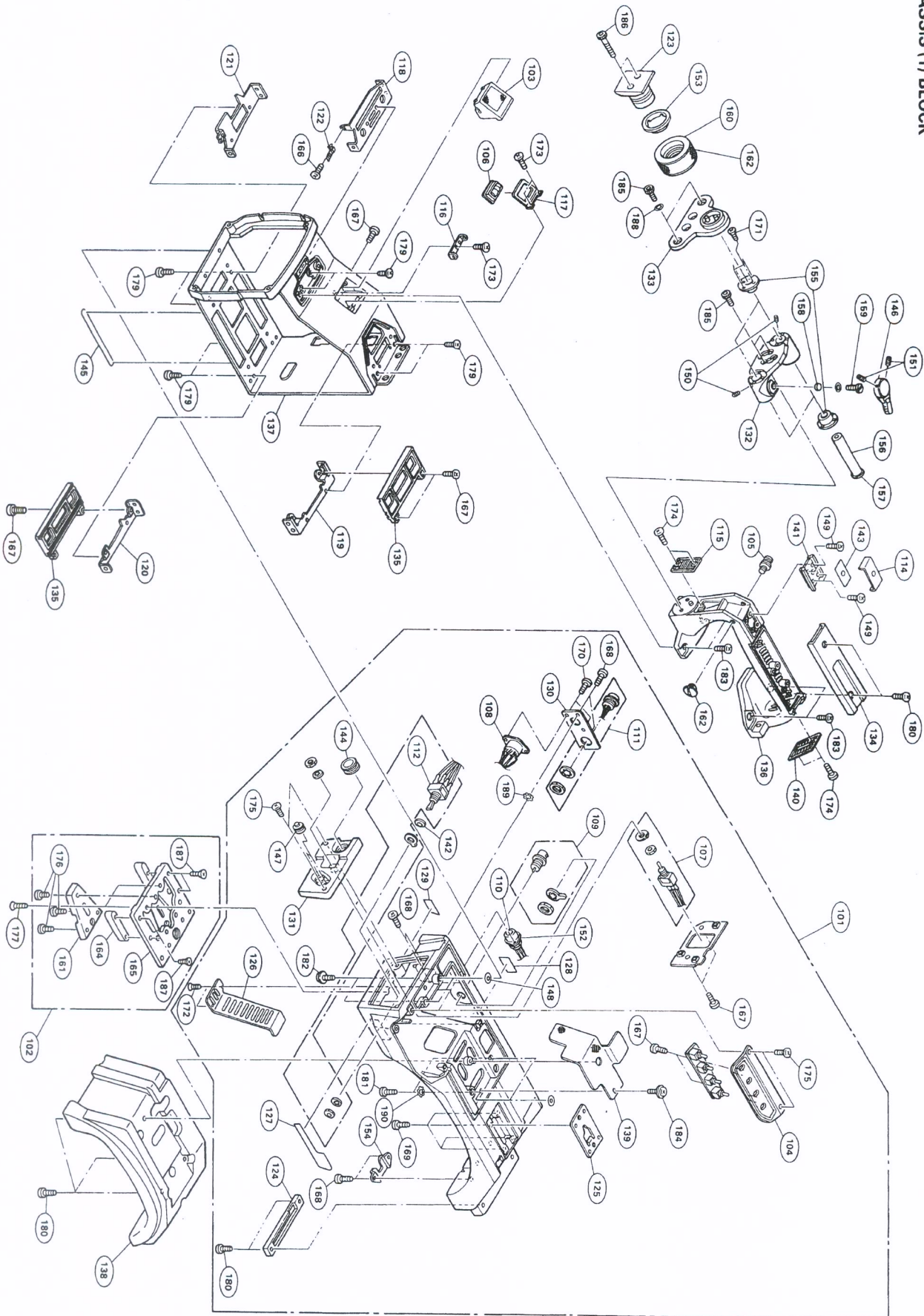


CHASSIS (1) BLOCK CHASSIS (1) BLOCK

CHASSIS (1) BLOCK



 CHASSIS (1) BLOCK

No.	Part No.	SP Description	No.	Part No.	SP Description
101	A-7420-201-A	o CHASSIS ASSY, BASE	161	3-716-391-01	o WEDGE, MOUNTING
102	A-7612-352-A	s SHOE (A) ASSY, V	162	3-720-919-01	o RUBBER, LOCK RING
103	X-3165-705-1	o GRILLE ASSY, MICROPHONE	163	3-725-907-01	s BUSHING, BLIND
104	X-3165-716-2	o PANEL ASSY, SIDE SW	164	3-729-064-01	o GUARD (A), CAMERA SHOE
105	X-3744-307-1	s SUSPENSION ASSY	165	3-729-065-01	s SHOE (A), CAMERA
106	1-542-126-31	s MICROPHONE UNIT	166	7-621-772-08	s SCREW +B 2X3
107	1-554-486-00	s SWITCH, TOGGLE	167	7-621-773-86	s SCREW +B 2.6X4
108	1-561-320-00	s SOCKET, DIN 8P	168	7-621-773-95	s SCREW +B 2.6X6
109	1-561-781-21	s CONNECTOR, BNC "VIDEO OUT"	169	7-621-775-08	s SCREW +B 2.6X3
110	1-562-221-21	s CONNECTOR, 12P "LENS"	170	7-621-775-20	s SCREW +B 2.6X5
111	1-562-782-21	s CONNECTOR, 10P "REMOTE VF"	171	7-627-452-58	s SCREW +K 2X6 TYPE1
112	1-572-659-11	s SWITCH, TOGGLE "POWER"	172	7-627-454-28	s SCREW, PRECISION +K 2.6X4.5
113	1-948-168-11	o HARNESS (CN)	173	7-627-556-37	s SCREW, PRECISION +P2.6X4 TYPE 1
114	2-277-468-01	o PLATE, ORNAMENTAL, CAMERA SHOE	174	7-627-556-38	s SCREW +P 2.6X4.0
115	3-168-324-02	o LID (B), HANDLE	175	7-627-556-58	s PRECISION SCREW +P 2.6X5 TYPE1
116	3-168-328-01	o BRACKET, MICROPHONE COVER	176	7-682-160-09	s SCREW +P 4X6
117	3-168-329-01	o BRACKET, MICROPHONE	177	7-682-262-09	s SCREW +K 4X10
118	3-168-330-01	o BRACKET (FRONT UPPER), PC BOARD	178	7-682-546-04	s SCREW +B 3X5
119	3-168-331-01	o BRACKET (REAR UPPER), PC BOARD	179	7-682-547-04	s SCREW +B 3X6
120	3-168-332-01	o BRACKET (REAR LOWER), PC BOARD	180	7-682-547-09	s SCREW +B 3X6
121	3-168-333-01	o BRACKET (FRONT LOWER), PC BOARD	181	7-682-562-04	s SCREW +B 4X10
122	3-168-334-01	o SPRING, AT	182	7-682-964-01	s SCREW +PSW 4X14
123	3-168-335-01	o SHOE (2), VF SLIDE	183	7-682-563-09	s SCREW +B 4X12
124	3-168-337-02	s FOOT	184	7-682-947-01	s SCREW +PSW 3X6
125	3-168-338-01	s SHOE, STOPPER	185	7-683-419-04	s BOLT, HEXAGON SOCKET 4X8
126	3-168-339-01	o COVER, BOTTOM	186	7-683-427-04	s BOLT, HEXAGON SOCKET 4X25
127	3-168-340-01	o LABEL (POWER)	187	7-685-234-19	s SCREW +KTP 2.6X8 TYPE2 N-S
128	3-168-341-01	o LABEL (VIDEO OUT)	188	7-688-004-02	s W 4, SMALL
129	3-168-342-01	o LABEL (LENS)	189	7-623-307-07	s LW2.6, TYPE A
130	3-168-355-01	o PLATE, CN	190	7-623-423-07	s LW4, TYPE B
131	3-168-360-01	o PANEL, FRONT SW			
132	3-168-361-02	o TABLE (2), FIXED, VF SLIDE			
133	3-168-362-01	o TABLE (2), FIXED, VF SHOE			
134	3-168-363-02	o LID (A), HANDLE			
135	3-168-364-01	o RAIL, PC BOARD			
136	3-168-369-02	o HANDLE			
137	3-168-370-03	o CABINET			
138	3-168-372-01	s PAD, SHOULDER			
139	3-169-037-01	o FILTER			
140	3-169-268-02	o LID (C), HANDLE			
141	3-657-700-00	s BRACKET, ACCESSORY			
142	3-669-117-21	o SPACER, MOTOR			
143	3-672-213-00	o SHEET, ADHESIVE			
144	3-672-221-02	s PACKING, CONTROL			
145	3-672-253-11	o RUBBER, CONDUCTIVE			
146	3-673-046-00	s LEVER, LOCK			
147	3-676-244-00	s COVER, SWITCH			
148	3-687-116-01	o WASHER (4), STOPPER			
149	3-689-039-11	s BOLT (M2X6), HOLE, HEXAGON			
150	3-701-506-01	s SET SCREW, DOUBLE POINT 3X4			
151	3-701-508-00	s SET SCREW, DOUBLE POINT 3X6			
152	3-710-002-01	o BRACKET			
153	3-710-018-01	o COLLAR, SLIDE			
154	3-711-703-01	o STOPPER			
155	3-711-790-01	o SPACER (A)			
156	3-711-791-01	o ARM			
157	3-711-792-01	o SCREW			
158	3-711-793-01	o CUSHION (STOPPER)			
159	3-711-794-01	o PIN, STOPPER			
160	3-711-795-11	o RING (B), LOCK			